

THE HILLTOP



THE HILLTOP

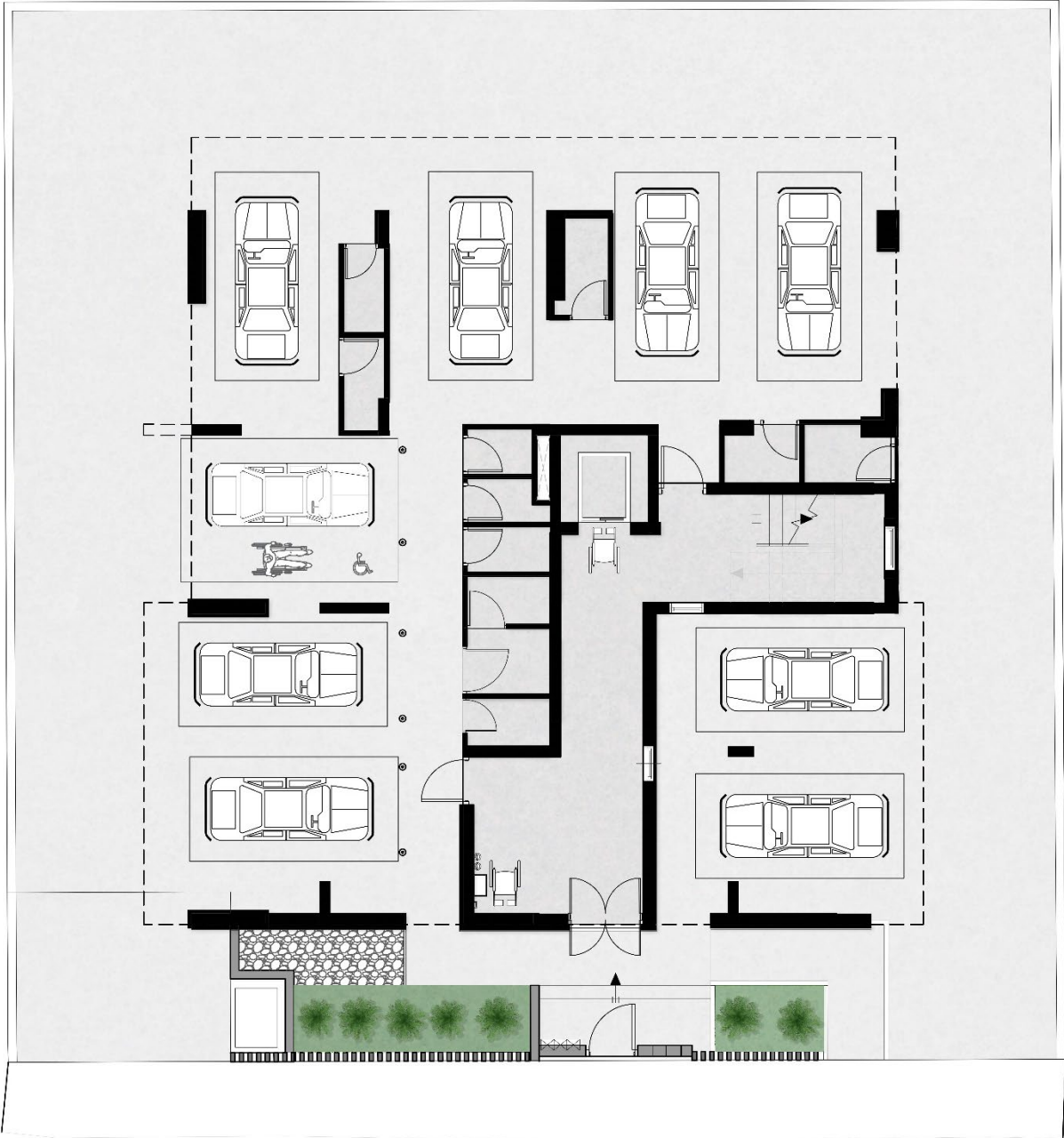
The Hilltop is a new residential development located in the heights of Platy in Aglantzia. The building consists of three levels and a ground level with covered parking spaces and dedicated storage areas for all residents.

The property comprises of eight apartments with large balcony openings and an abundance of day light. The profound design and finishes of the building along with the spacious apartment layout, make the Hilltop ideal for individuals and families. The development consists of 1-bedroom, 2-bedroom and 3-bedroom apartments. All apartments come with comfortable living areas and bedrooms, along with their own large covered verandas and photovoltaic panels. The high-end finishes and details along with the superior quality present within the common areas and all of the units create the perfect home experience.





GROUND FLOOR



FIRST FLOOR



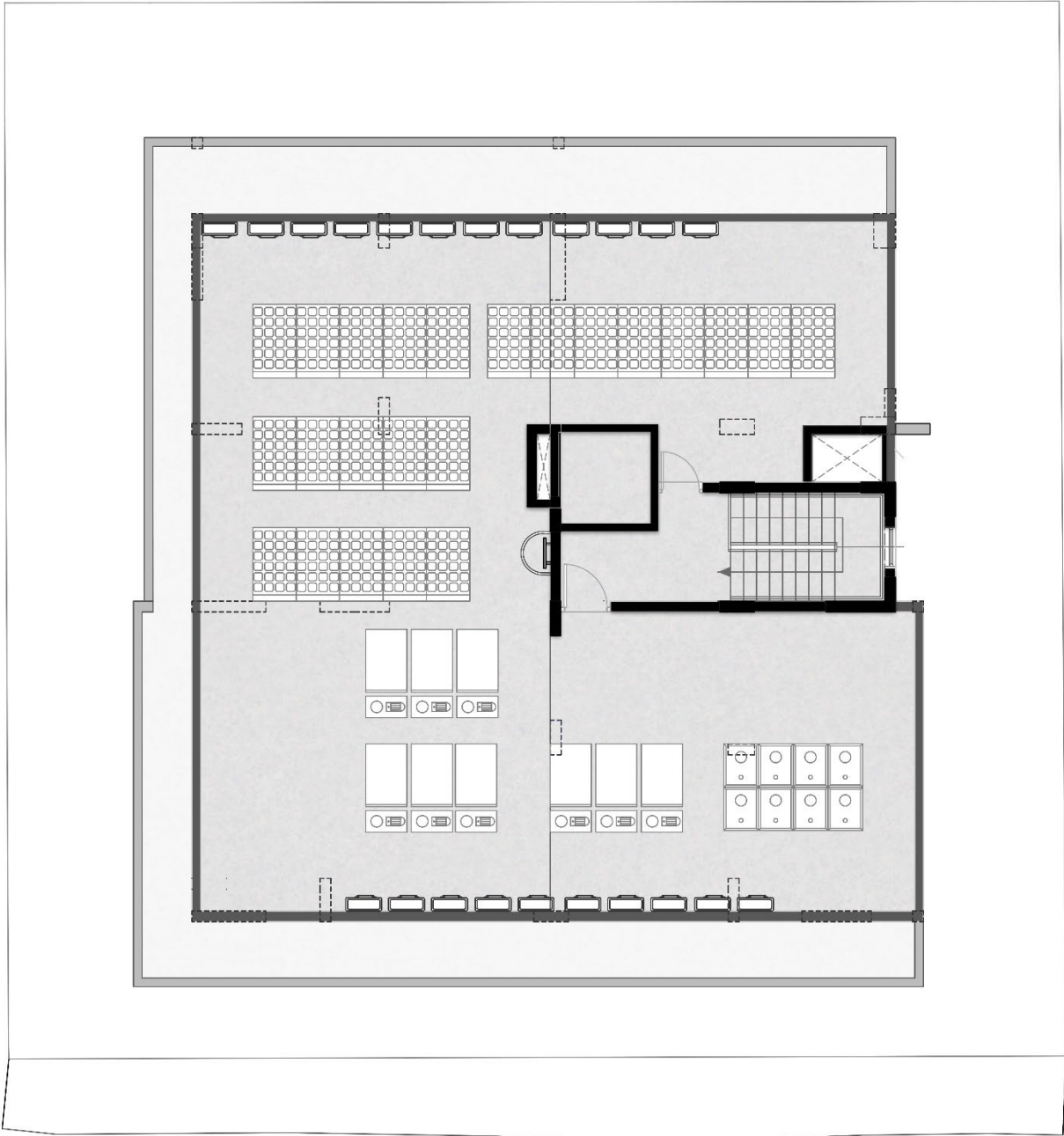
SECOND FLOOR



THIRD FLOOR



ROOF TERRACE



APARTMENTS

Unit	Interior (m ²)	Verandas (m ²)	Bedrooms	Parking	Storage
101	90	25	2	1	1
102	57	15	1	1	1
103	90	18	2	1	1
201	90	25	2	1	1
202	57	15	1	1	1
203	90	18	2	1	1
301	113	25	3	1	1
302	111	51	3	1	1

SPECIFICATIONS

Frame

The frame of the building will consist of reinforced concrete.

Building Energy Performance

The building has a Class A Energy Performance Certificate and will comply with the highest standards in energy efficiency and sustainability.

Walls

The building exterior will be constructed with 330mm high quality thermal insulated bricks.

Weatherproofing

The roof will be insulated and waterproofed using insulation and impermeable membranes. Exposed areas such as verandas will be waterproofed.

Flooring

All services will be covered and light weight screed will be used to prepare the floor for any finishes.

Paint

All painting will be performed using the highest quality of products and a minimum of three coats.

Plumbing

All apartments will be provided with a pressurized water system, dedicated water tanks and hot water supply system.

Mechanical

The building and apartments will maintain a Class A Energy Efficient rating. All required areas will be ventilated accordingly. Underfloor heating is available in select units. Air conditioning provision for split units and electrical heating bodies is available in all units.

Electrical

All electrical work will be performed as per the electrical engineer and per the required specifications and code.

Elevator

The building will have an 8-person high end elevator with an alarm and emergency system.

Access Control

A video access control system will be installed at the building entrance with corresponding control panels in all units.

Aluminum Doors & Windows

All aluminum doors and windows will be high quality double-glazed insulated systems. Provision for electrical shutters at all applicable windows will be available.

Woodwork

All woodwork, including interior doors will be furnished as per the drawings and will be constructed with high quality material. Exterior apartment doors will be high security fire-rated doors.

CONTACT INFORMATION



SUPERIOR

81-83 GRIVAS DIGENIS AVE. NICOSIA, CYPRUS

TEL: 99 72 79 79

INFO@SUPERIORCY.COM

www.superiorcy.com